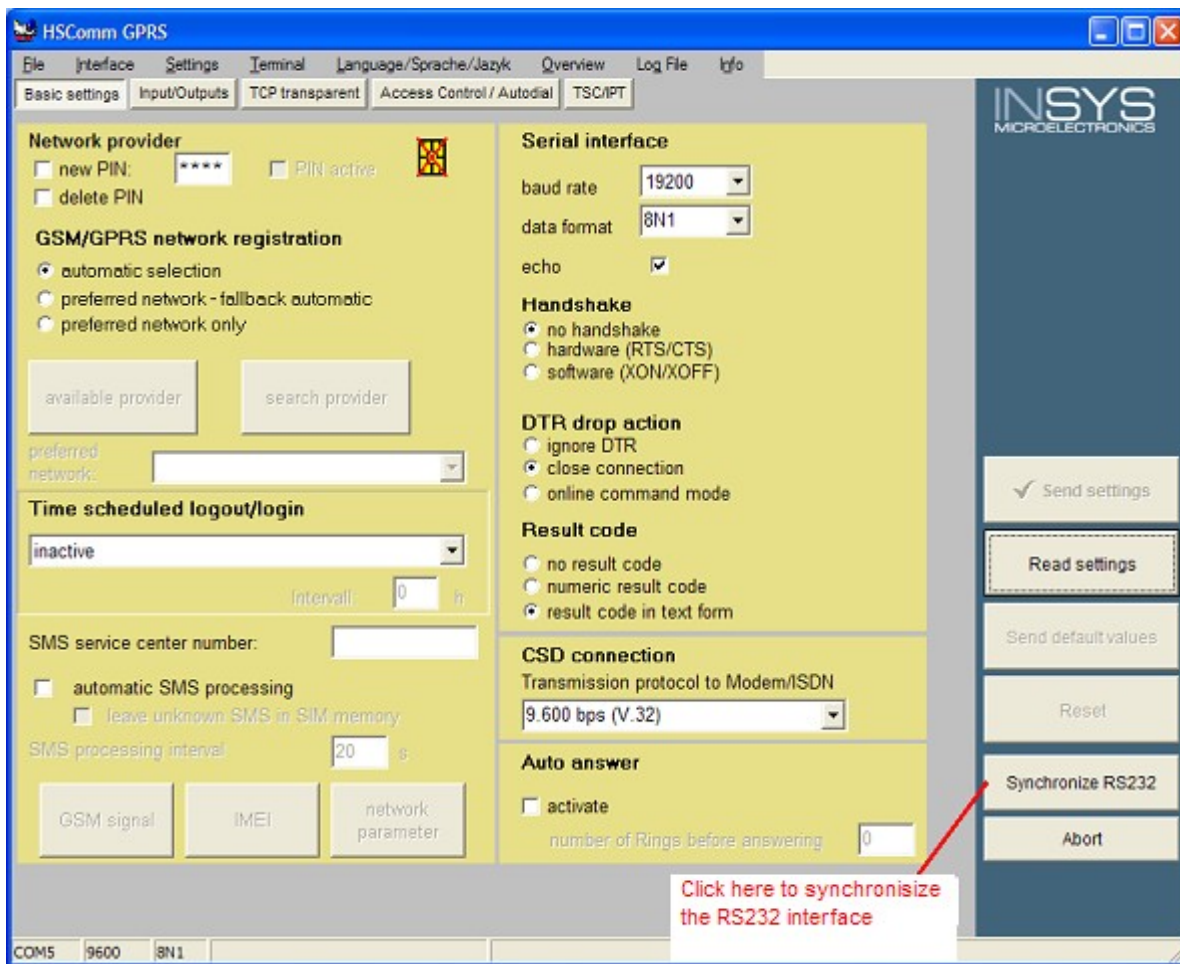


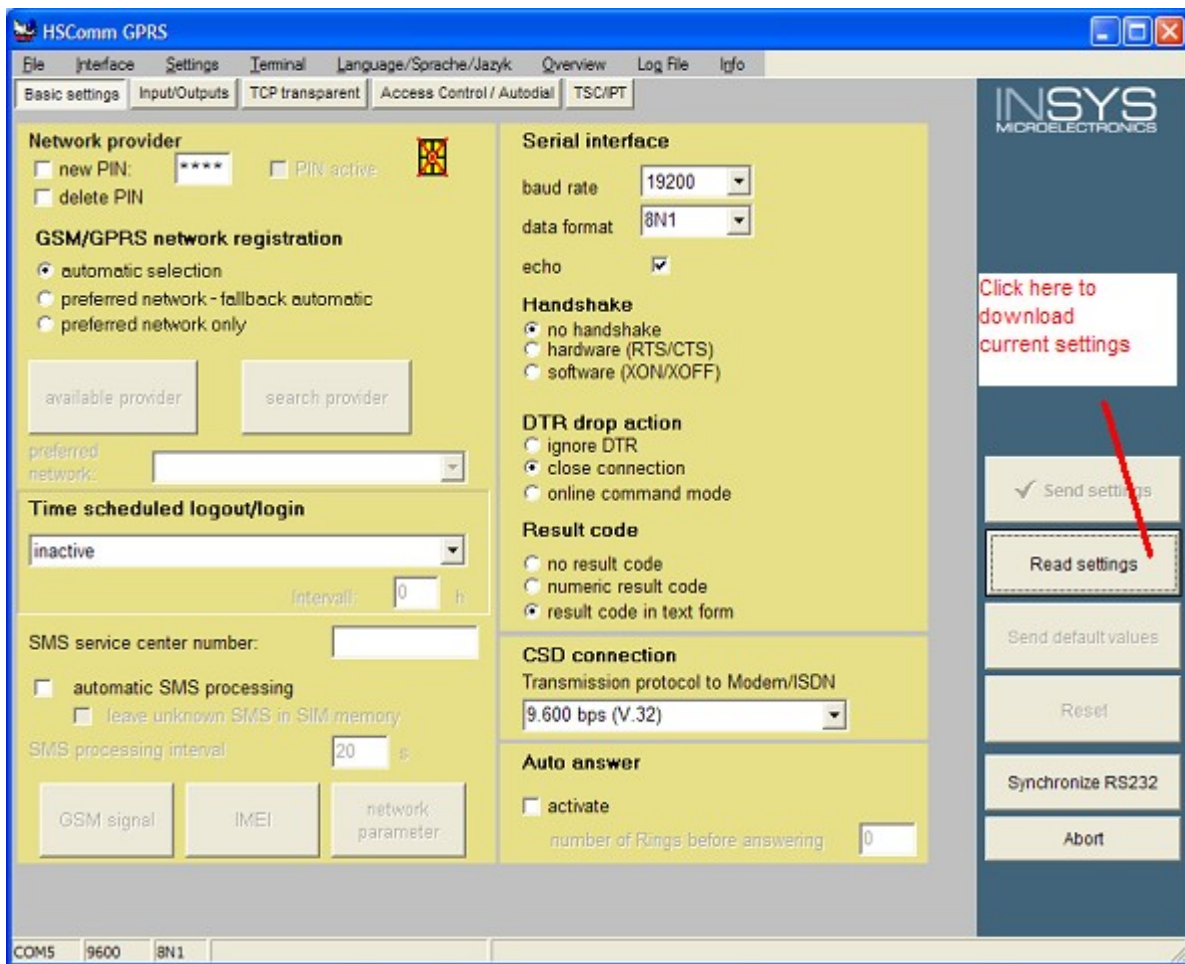
Guide: Modem settings for remote monitoring

The following steps explain you how to install your modems for a remote monitoring system.

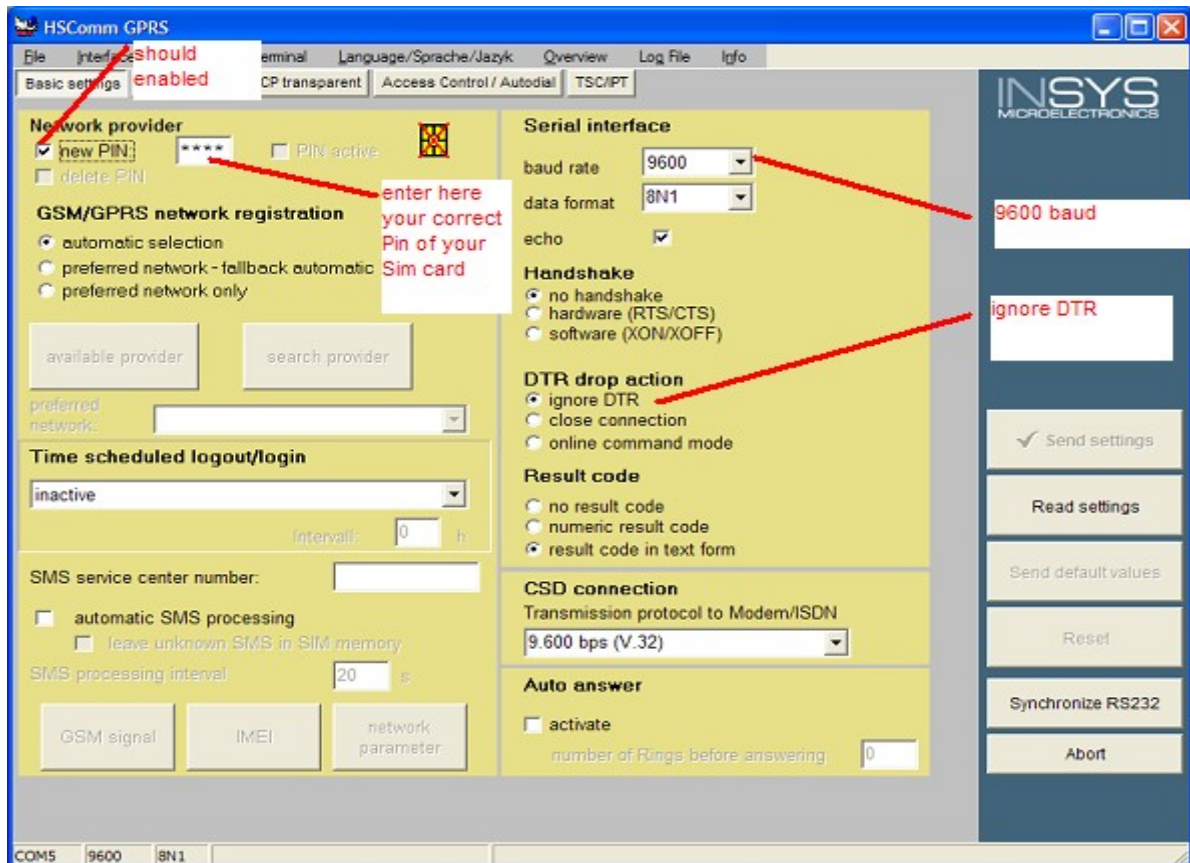
1. Connect the antenna to the modems
2. Insert the SIM card (Please use the modem manual if you need help for that)
3. Give the modems power (see also the modem manual) (10V - 60V)
4. Install the RS232 to USB converter on your PC or use direct the RS232 connection to communicate with the modem which should be adjusted.
5. Install the HSCOMM (MODCOM_for_MCU\GPRS Modem\hscomm.exe) Following the setup instruction (If you need help please use also the modem manual)
6. Use the HSComm now to make the correct settings for the modem. Wait about 1 min until the signal LED (of the modem) is on or blinking.
7. Click on "Synchronise RS232" (see picture1)
8. Click on "Read settings" (see picture2)
9. Now make the settings, in picture 4 you will see the settings for the modem which is connected to the MCU, and on picture 3 you will see the settings for the modem which is connected to your PC (during the remote monitoring.)
10. Finish the settings for both modems
11. Connect now the modems in the same way as you could see in picture6 to start your remote monitoring system.



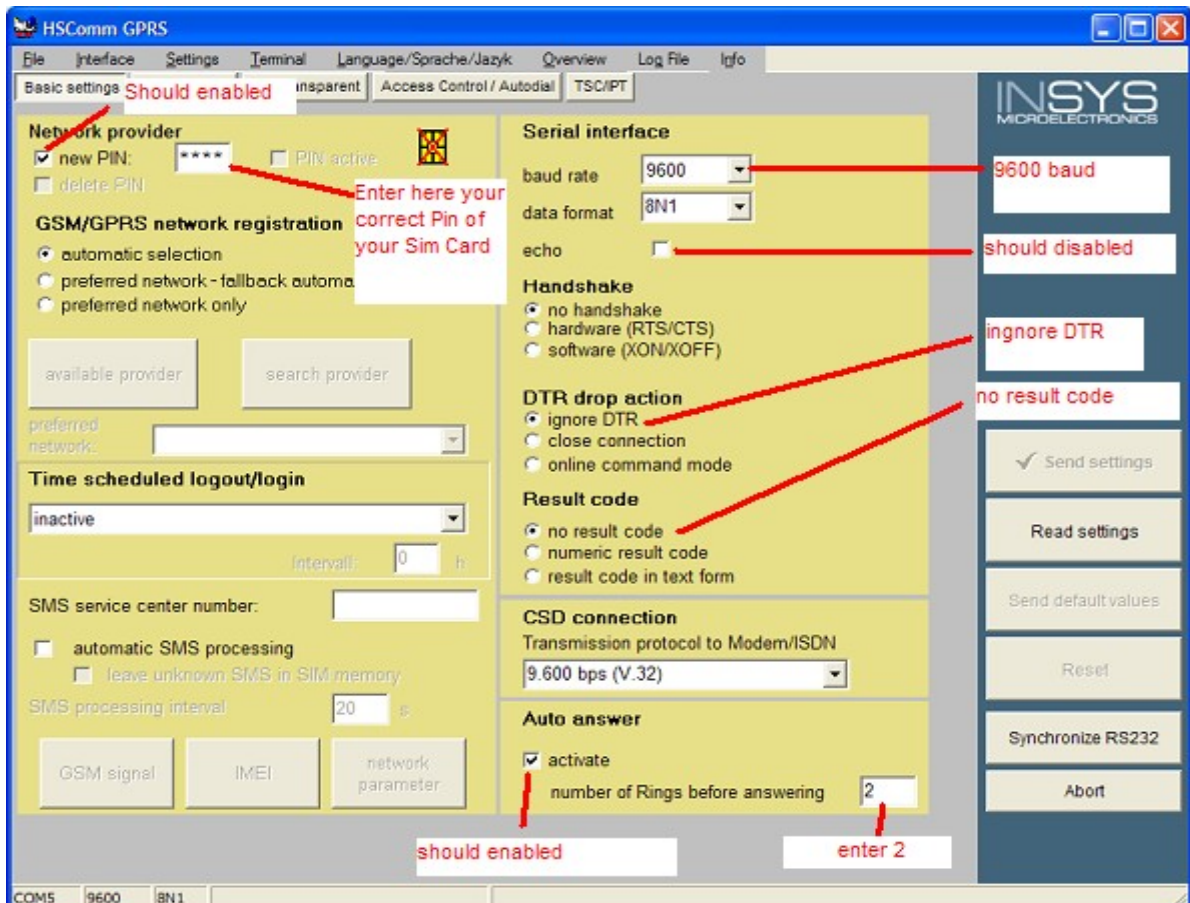
Picture 1: RS232 Synchronisation



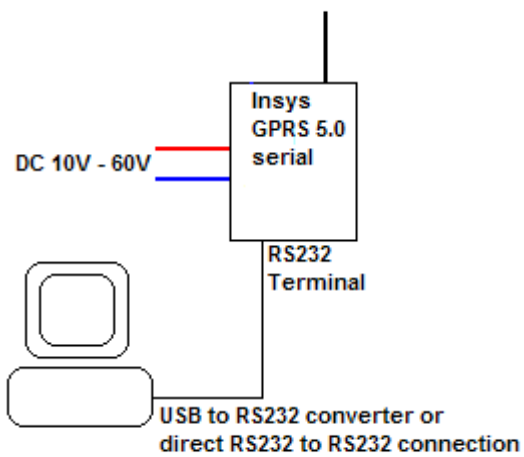
Picture 2: Download modem settings



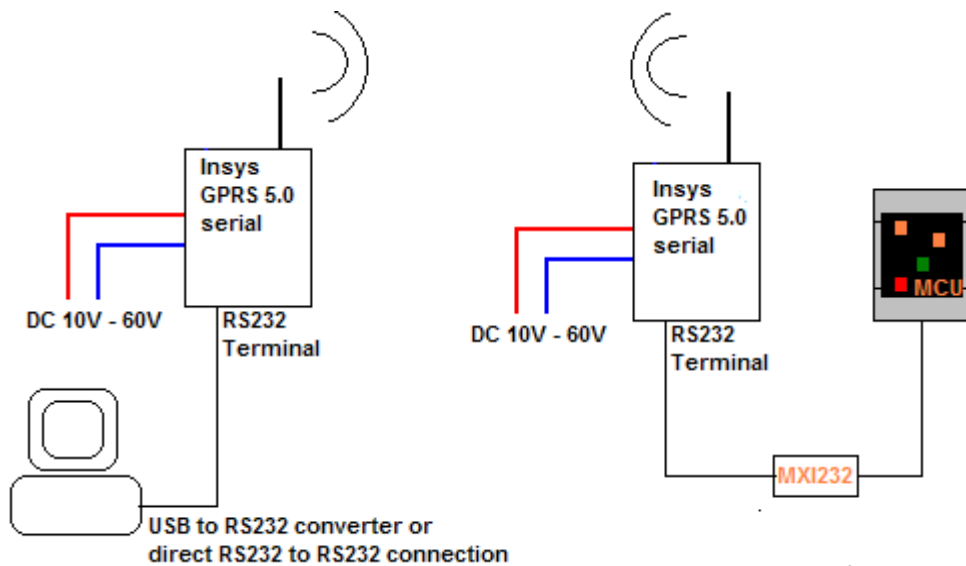
Picture 3: Settings for the modem on your PC during the remote controll



Picture 4: Settings for the modem which is connected to the MCU



Picture 5: Connection PC modem during making the settings



Picture 6: Connection during the remote monitoring